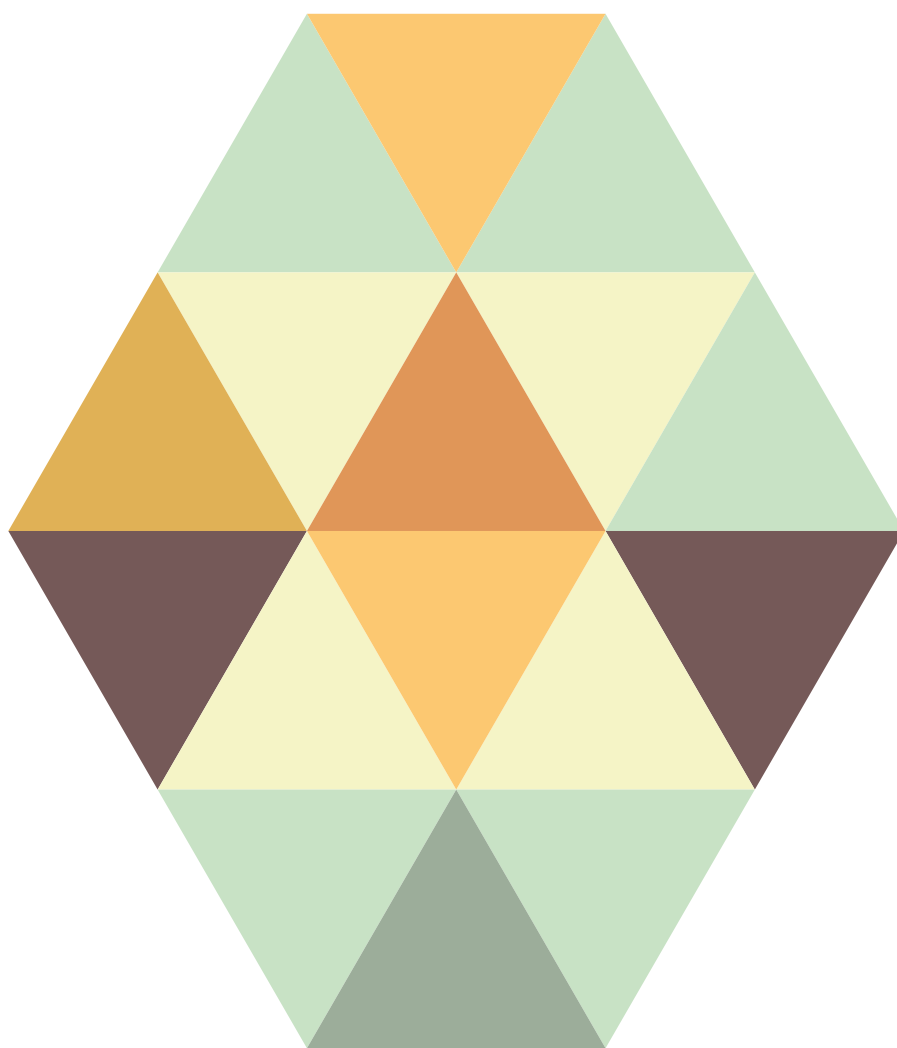




MINOA
PALACE RESORT



CONFERENCES & EVENTS



Meeting all Challenges!

www.minoapalace.gr

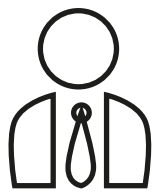
CONFERENCE FACILITIES

Minoa Palace Resort is a fully contained conference and event destination. Take advantage of our conference rooms and meeting facilities, fully equipped with sophisticated and highly advanced digital audio-visual equipment to establish the success of your business seminars and meetings. The hotel's compre-

hensive conference sta provides a full range of services to ensure that business and meetings flow easily. Minoa Palace Resort provides full food and beverage services and the hotel's highly skilled meeting and banqueting team offers personalized attention and valuable service for a successful meetings.



Modern AV technology & technical support



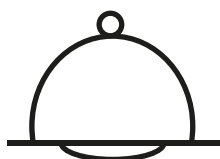
Conference Coordinator for pre- & post-meeting assistance



High speed Wi-Fi available in all meeting rooms



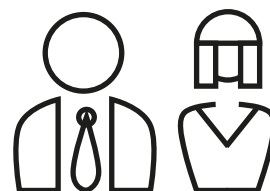
Written basic proposal & quotation for the event within 24 hours of initial enquiry



Custom catering menus with food & beverage enhancements



Group Online Reservations saving the trouble of consolidating bookings & rooming lists



Events management team organizes & handles all event arrangements

Meeting all Challenges!



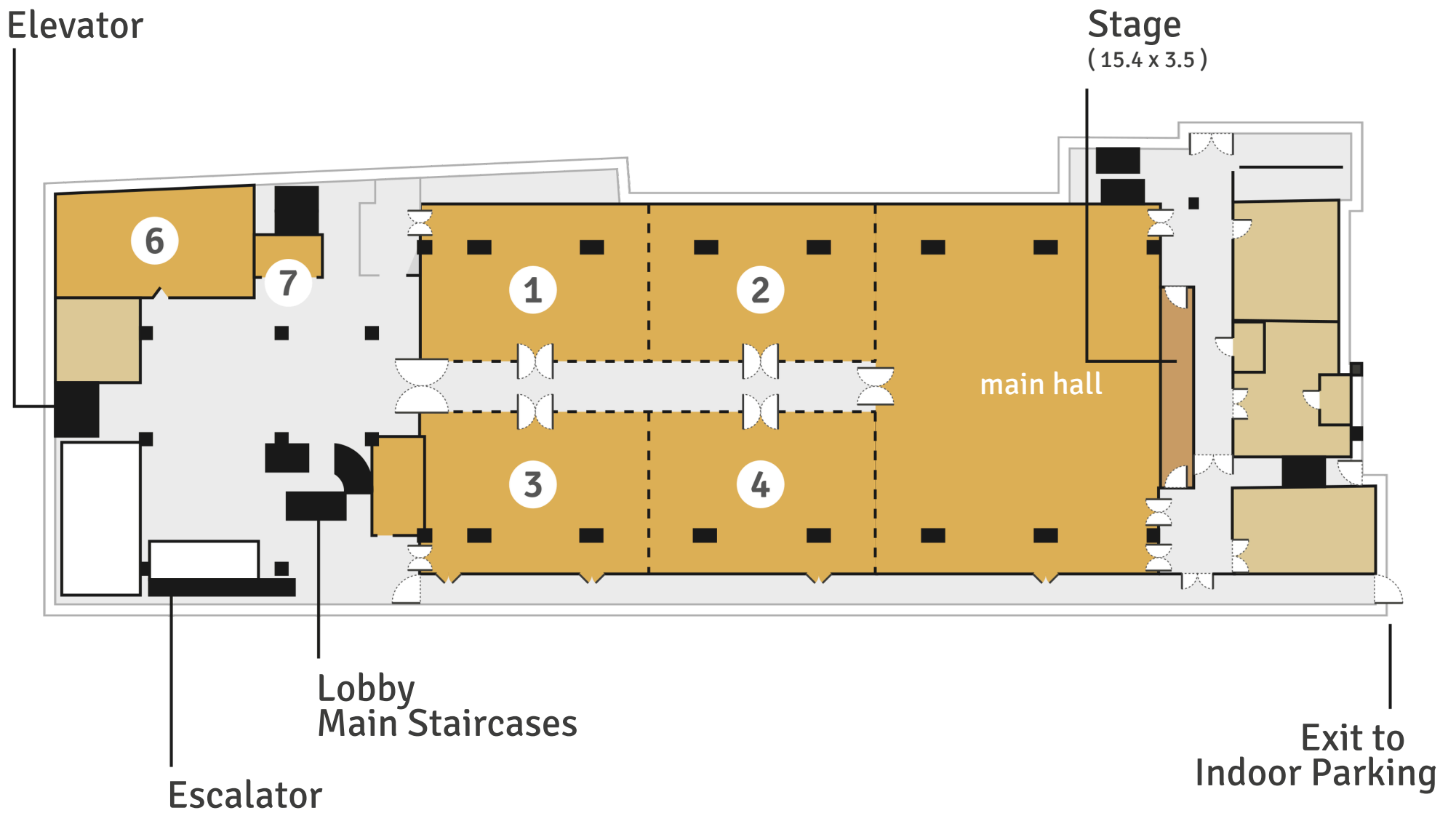
State of the art facilities, the latest audiovisual equipment, comfort, high class decoration and cutting edge design.

State of the art facilities, the latest audiovisual equipment, comfort, high class decoration and cutting edge design are only few words to describe the unique in Western Crete, "**Imperial Congress Hall**". Covering an area of 1400sqm & maximum height 5,50m, rectangular, pillar less with a capacity of over 1500 delegates.

Can be reconfigured into 5 separate meeting rooms of 50-650 delegates, by movable soundproof panels (up to 53db). In combination with the exhibition areas of 1150sqm the new congress hall offers flexibility and functionality for meetings, exhibitions conferences and events, requiring an impressive backdrop!

IMPERIAL

congress hall



Conference Hall/ Meeting Room	DIMENSIONS				CAPACITIES					LIGHTING	A/C	FLOOR/ COVER
	Surface	Height	Length	Width	Theater	Classroom	U-Shape	Buffet	Cocktail			
IMPERIAL CONGRESS HALL	1510	5.5	54.2	27.83	1600	800	N/A	N/A	1500	Electricity	YES	Ground/Carpet
MAIN HALL	570	5.5	22.2	25.7	670	410	N/A	100	650	Electricity	YES	Ground/Carpet
HALL I ①	170	5.5	16	10.7	200	120	N/A	50	190	Electricity	YES	Ground/Carpet
HALL II ②	170	5.5	16	10.7	200	120	N/A	50	190	Electricity	YES	Ground/Carpet
HALL III ③	181	5.5	16	11.4	215	130	N/A	50	200	Electricity	YES	Ground/Carpet
HALL IV ④	181	5.5	16	11.4	215	130	N/A	50	200	Electricity	YES	Ground/Carpet

⑥ WC ⑦ Conference Reception

Additional Notes

1. N/A means Not Available.

2. "Electricity" in the Lighting field means that lighting is artificial.

3. All dimensions are indicated in SI, that means in meters where length is concerned or square meters where surface is concerned.



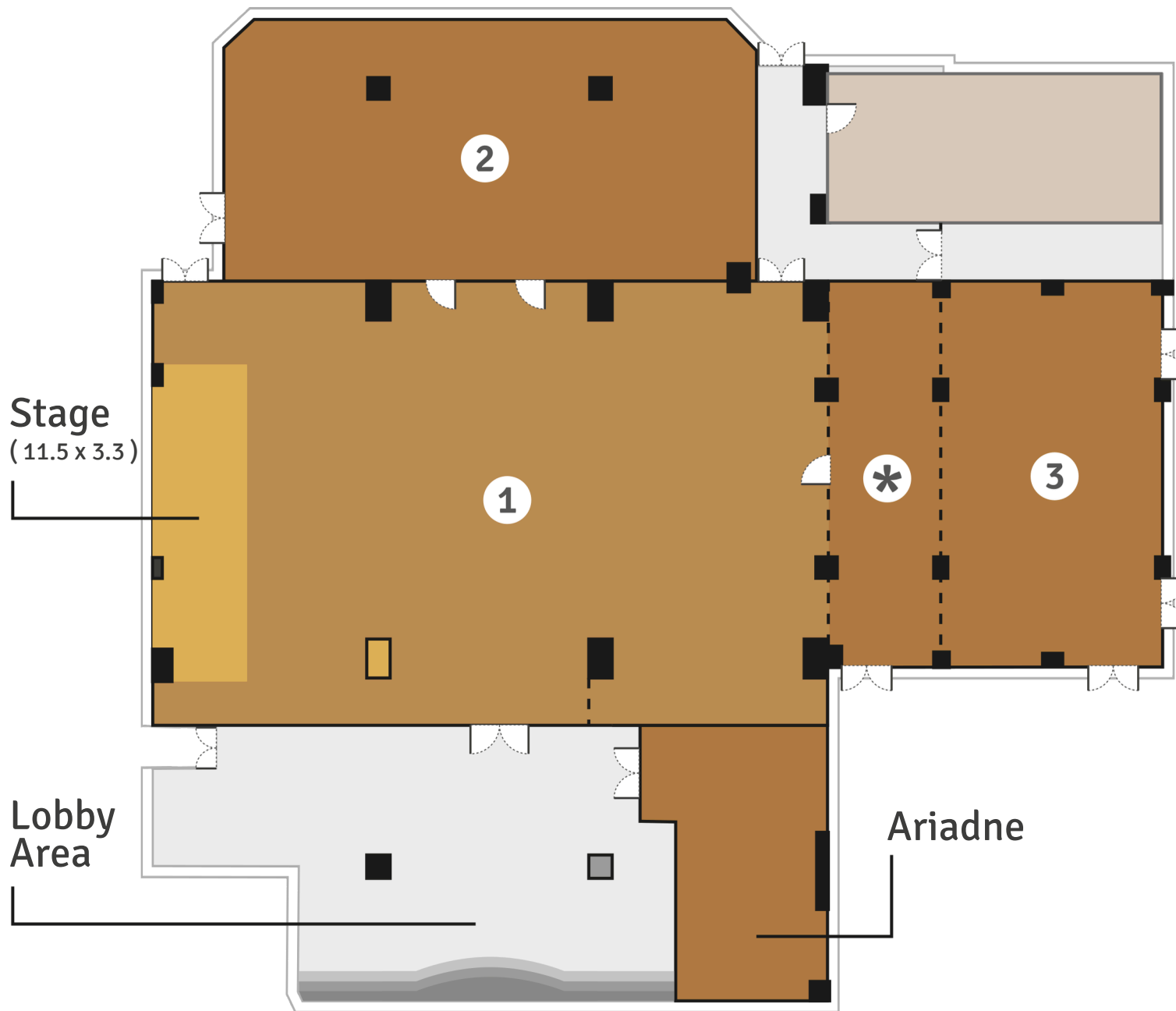
*From business
conference,
workshops &
product launches
to exhibitions,
wedding recep-
tions & gala
dinners.*

“Athina Conference Hall” provides an additional conference area of 720sqm, maximum height 3,50m, total capacity of 750 persons and exhibition areas of 200sqm. It offers as well, the possibility of reconfigure into 3 *smaller rooms* by mova-

ble soundproof panels (up to 45db). “Athina Conference Hall” is also ideal for simultaneous meetings, lectures, shows, presentations, workshops & exhibitions & receptions in combination with gala dinners, receptions, banquets & cocktails.

ATHINA

conference hall



Conference Hall/ Meeting Room	DIMENSIONS				CAPACITIES					LIGHTING	A/C	FLOOR/ COVER	
	Surface	Height	Length	Width	Theater	Classroom	U-Shape	Buffet	Cocktail				
ATHINA CONFERENCE HALL	720	3.5	-	-	780	500	N/A	350	770	Electricity	YES	Ground/Carpet	
ATHINA I	1	390	3.5	24.9	16.2	430	270	110	150	420	Electricity	YES	Ground/Carpet
ATHINA I+	1 + *	445.2	3.5	28.9	16.2	490	310	125	170	450	Electricity	YES	Ground/Carpet
ATHINA II	2	172	3.5	19.1	9.3	180	120	50	N/A	200	Electricity	YES	Ground/Carpet
ATHINA III	3	105	3.5	7.6	13.8	110	70	30	N/A	110	Electricity	YES	Ground/Carpet
ATHINA III+	3 + *	158	3.5	11.7	13.8	170	120	50	N/A	200	Electricity	YES	Ground/Carpet
ARIADNE		54	3.0	9.8	5.2	40	30	20	N/A	N/A	Electricity	YES	Ground/Carpet

Additional Notes

1. N/A means Not Available.

2. "Electricity" in the Lighting field means that lighting is artificial.

3. All dimensions are indicated in SI, that means in meters where length is concerned or square meters where surface is concerned.